

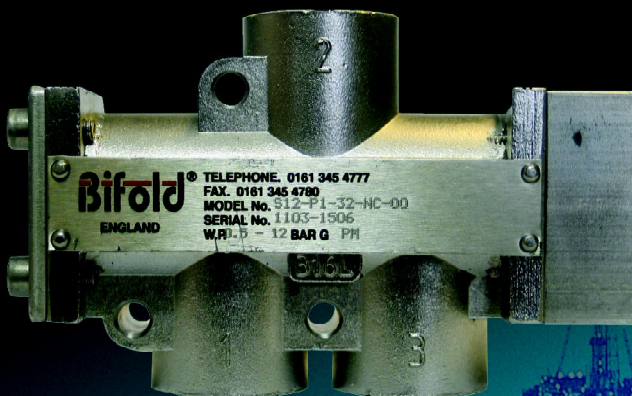
Pilot Valves Model Domino

Up to 12 bar operating pressure

Superior performance
throughout the
full operational range

Features:

- CV up to 2.0
- 316L stainless steel
- 1/4" NPT, 3/8" NPT or 1/2" NPT
(BSPP option available)



TECHNICAL INFORMATION

OPERATING MEDIA

- Air, sweet and sour gas

OPERATING PRESSURE

- 2-12 bar standard

FLOW PERFORMANCE

- 1/4" CV = 1.2
- 3/8" CV = 1.9
- 1/2" CV = 2.0

TEMPERATURE RANGE:

- -20°C to +180°C ambient.

MECHANICAL CONSTRUCTION

- Body:- stainless steel 316L
- Fasteners:- Metric A4 18/10 316 grade stainless steel
- Seat Material:- Viton (standard). Alternative elastomers available for extreme conditions
- Springs:- stainless steel 316
- Ports:- 1/4" NPT, 3/8" NPT & 1/2" NPT (BSPP options available)

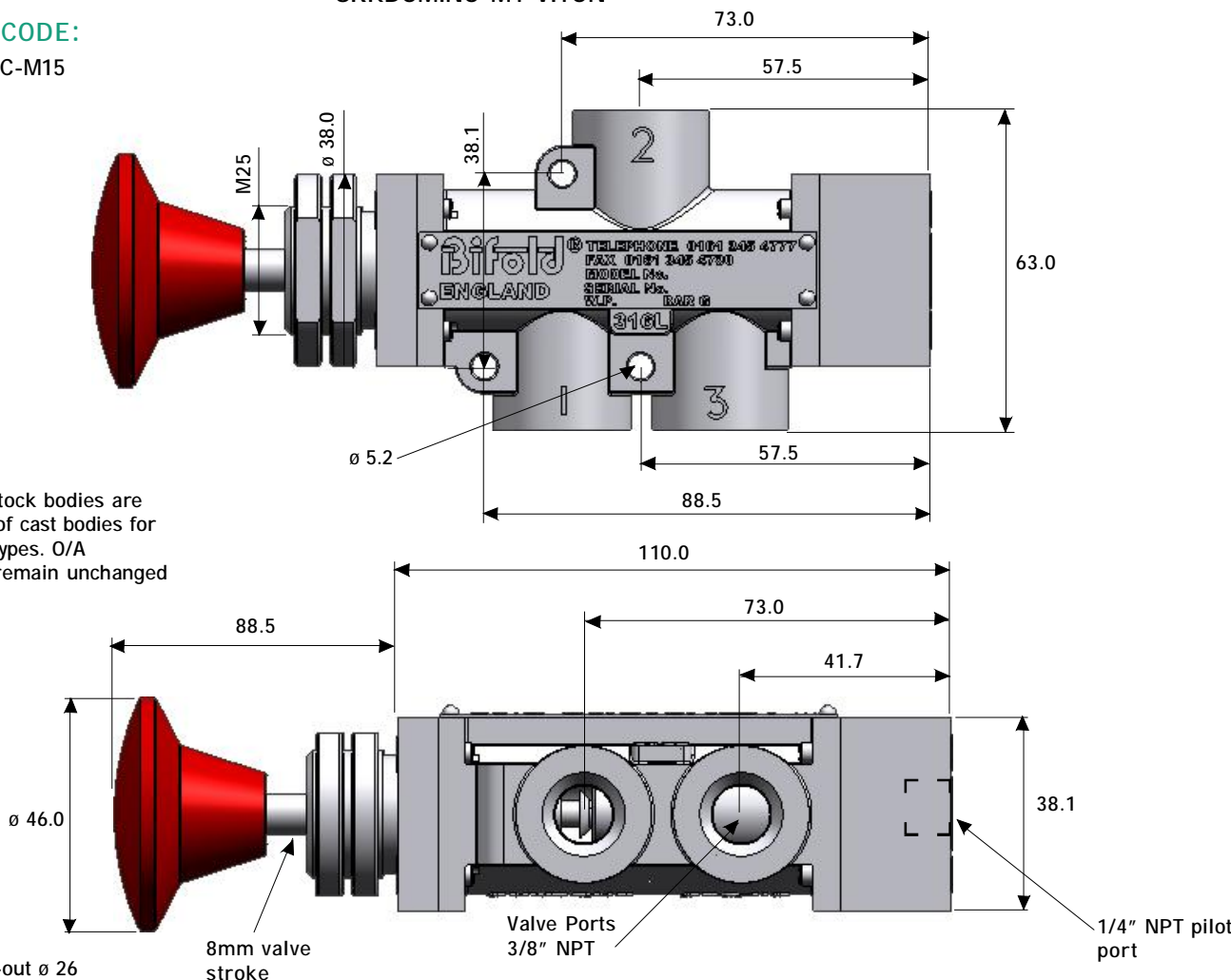
SEAL REPAIR KITS

example codes:-

- SRKDOMINO-P1/00-VITON
- SRKDOMINO-P9-VITON
- SRKDOMINO-M1-VITON

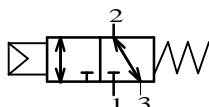
EXAMPLE CODE:

S09-P9-32-NC-M15



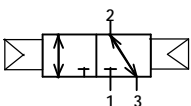
NOTE:- Barstock bodies are used in lieu of cast bodies for some valve types. O/A dimensions remain unchanged

PREFERRED RANGE



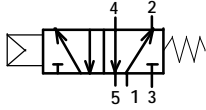
S06-P1-32-NC-00

1/4" NPT, pilot operated, 3 way 2 position, normally closed, spring return, C.v. 1.2, 12 bar max



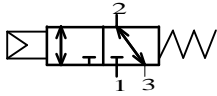
S06-P1-32-NC-P1

1/4" NPT, pilot operated, 3 way 2 position, normally closed, pilot return, C.v. 1.2, 12 bar max



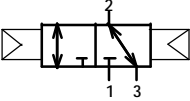
S06-P1-52-XX-00

1/4" NPT, pilot operated, 5 way 2 position, spring return, C.v. 1.2, 12 bar max



S12-P1-32-NC-00

1/2" NPT, pilot operated, 3 way 2 position, normally closed, spring return, C.v. 2.0, 12 bar max



S06-P1-32-NC-P1

1/2" NPT, pilot operated, 3 way 2 position, normally closed, pilot return, C.v. 2.0, 12 bar max

SELECTION CHART

S06	1/4" NPT	Model Code
S09	3/8" NPT	
S12	1/2" NPT	
P1	pilot operator	Air Pilot Primary Actuator
P4	pilot operator with manual reset	
P5	pressure sensing pilot	
P6	low pressure pilot (1bar)	
P8/1	time delay (latch on de-energize)	
P9	air latch pilot operator	
M1	push button	Hand / Mechanical Primary Actuator
M2	push button panel mounted	
M3	push/pull panel mounted	
M5	key operator	
M51	manual key operator	
M6	lever operator	
M9	push button with padlock mount	
22	2-way, 2-position	Configuration
32	3-way, 2-position	
52	5-port, 2-position	
NC	Normally Closed - 2/2 & 3/2 only	Configuration
NO	Normally Open - 2/2 & 3/2 only	
XX	52 valves only	
CO	changeover - 3/2 only	
DV	divertor - 3/2 only	
00	spring return end cap	Return devices - Secondary Actuator
03/1	spring cap with mechanical latch - latch on de-energize	
03/2	spring cap with mechanical latch - latch on energize	
04	blanking cap - detented valves	
P1	pilot operator	Air Pilot - Secondary Actuator
M1	push button	Hand / Mechanical - Secondary Actuator
M15	pull button spring return with panel mount	
M16	pull button spring return with preliminary latch & panel mount	
K4	Valve exhaust bug vent	Options
K6	BSP port option	
S09 - P9 - 32 - NC - M15		Ordering Example

UK Office

Greenside Way, Middleton, Manchester, M24 1SW

Tel:- +44 (0)161 345 4777

Fax:- +44 (0)161 345 4780

E-Mail:- sales@bifold-fluidpower.co.uk

Web:- www.bifold-fluidpower.co.uk

USA Office

11490 Westheimer, Suite 900, Houston, Texas, 77077

Tel:- +1 713 783 4253

Fax:- +1 713 783 0067

Email:- sales@bifold-fluidpower.com

Web:- www.bifold-fluidpower.com

Asia Pacific Office

424 Balestier Road #02-08, Giffard Mansion, Singapore 329810

Tel:- +65 6735 1323

Fax:- +65 6735 1367

E-Mail:- bifold@singnet.com.sg

Quality Assurance

All Bifold Fluidpower products are manufactured to a most stringent QA programme. Every care is taken at all stages of manufacture to ensure that every product will give optimum performance and reliability. We are recognised to EN ISO 9001:2000. Functional test certificate, letter of conformity and copies of original mill certificates, providing total traceability are available on request, to BSEN 10204 3.1.B where available. The manufacturer reserves the right to

Accuracy of information

We take care to ensure that product information in this catalogue is reasonably accurate and up-to-date. However, our products and services are continually updated so to ensure accurate and up-to-date information please refer to

